



Three Rivers Local Cycling and Walking Infrastructure Plan (LCWIP)

EXECUTIVE SUMMARY | FEBRUARY 2023

What is an LCWIP?

A Local Walking and Cycling Infrastructure Plan (“LCWIP”) is a transport planning process used to identify and prioritise ways to make it easier and more pleasant to walk and cycle in your local area.

According to the Department for Transport’s Cycling and Walking Investment Strategy (2017), the LCWIP’s aim is to **“make walking and cycling the natural choices for shorter journeys or as part of longer journeys”**.

Three Rivers and Hertfordshire County Council have worked in partnership to produce this LCWIP for Three Rivers District, with a focus on the areas that have the greatest potential demand for walking and cycling.

The LCWIP process includes...



Analysing existing travel patterns and the potential for new journeys

Identifying where people start and end their journeys



Mapping the most commonly used routes

Speaking to local people about barriers to walking/cycling



Checking the main walking and cycling routes by bike or on foot

Identifying what kind of improvements are needed



Prioritising potential improvements for future delivery

Why are LCWIPs important?



Health

Physical inactivity costs the NHS billions of pounds per year. Walking and cycling more will prevent illnesses and take the pressure off health services.



Safety

Improving walking and cycling infrastructure will make it safer for residents to travel sustainably, reducing injuries and helping people of all ages feel comfortable.



Climate

Transport is one of the biggest contributors to climate change. Helping people shift towards walking and cycling will reduce emissions in a very cost-efficient way.



Clean air

Doubling walking and cycling trips would prevent 8,300 premature deaths every year, as lower levels of traffic will reduce congestion and cause less pollution.



Local economy

Cycling contributes £5.4bn to the economy and supports 64,000 jobs. Having good walking and cycling links helps businesses hire staff and attract visitors.

Having an adopted LCWIP will help us to secure more funding for local walking and cycling projects, and make sure that our projects provide the best value for money by focussing on those areas likely to have the biggest increases in walking and cycling.

The LCWIP will also help us to coordinate other opportunities to carry out walking and cycling improvements, to build up a network of routes – for example, through new development or other works – and create healthier, safer and more pleasant streets.

Context

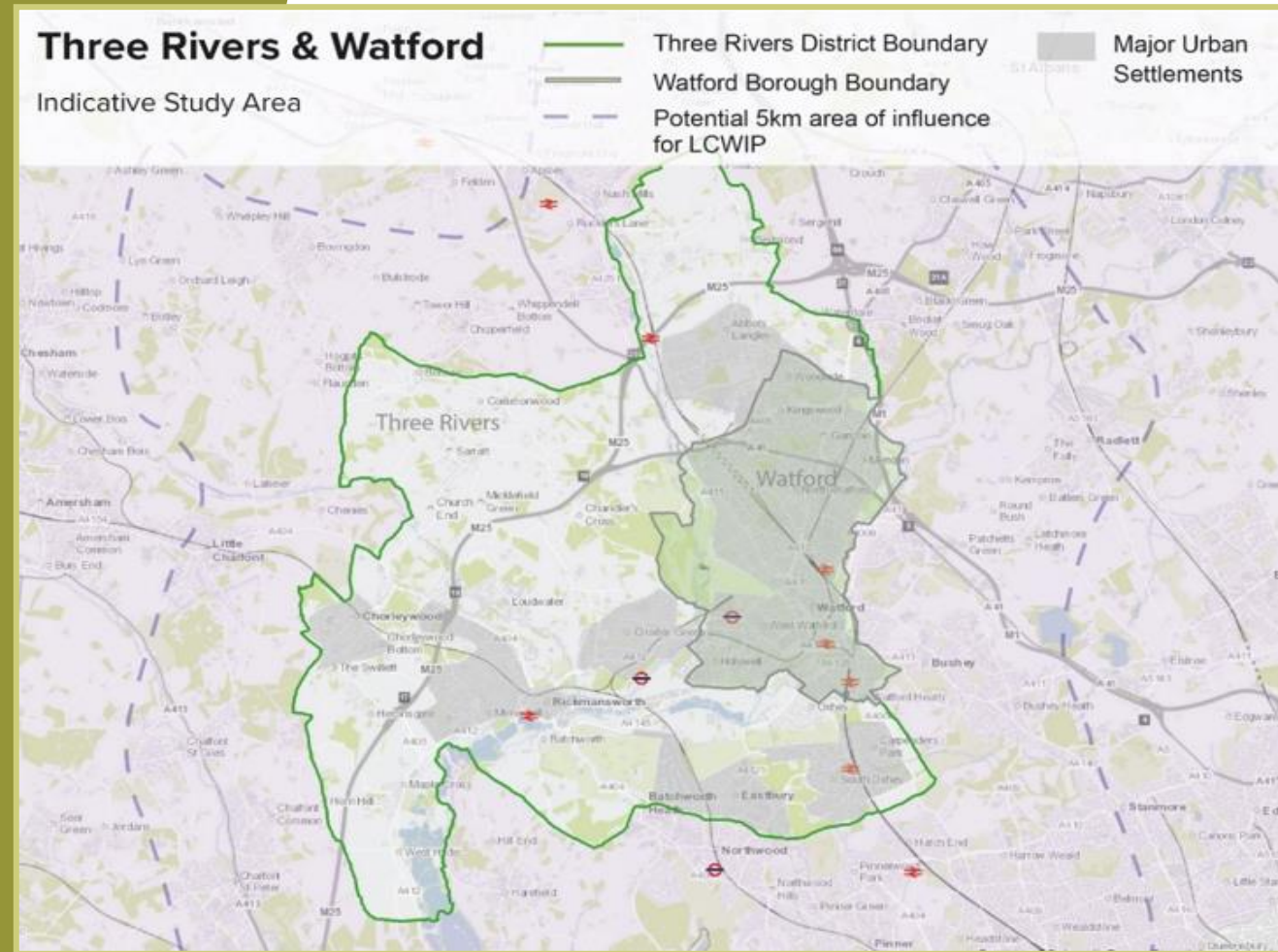
There are strong geographical links between Watford and Three Rivers so the LCWIP considers the route network across both authorities. The Watford part of the LCWIP has already been finalised and adopted. Further details can be found in the full technical report.

Three Rivers District is located to the West of the study area and is made up of more suburban and rural characteristics with strategically important transport corridors.

Three Rivers district is served by National Cycle Network 6, which follows the Ebury Way. There is also the Grand Union Canal which can be walked or cycled.

In the 2022 County Travel Survey, 20% of TRDC respondents reported that walking was their main mode of travel on their chosen travel day.

17% of journeys **under 1 mile** in Three Rivers were undertaken by car, a distance which can be easily walked or cycled.



Over 60% of journeys in Three Rivers are currently made by car, but...

33% of journeys are less than 1 mile

Many of these journeys can be walked in **less than 20 minutes...**

... or cycled in just **6 minutes!**



63% of journeys are less than 5 miles

Right now, **over half** of these journeys are taken by car...

... or you could cycle for just **30 minutes!**

Potential for more walking and cycling

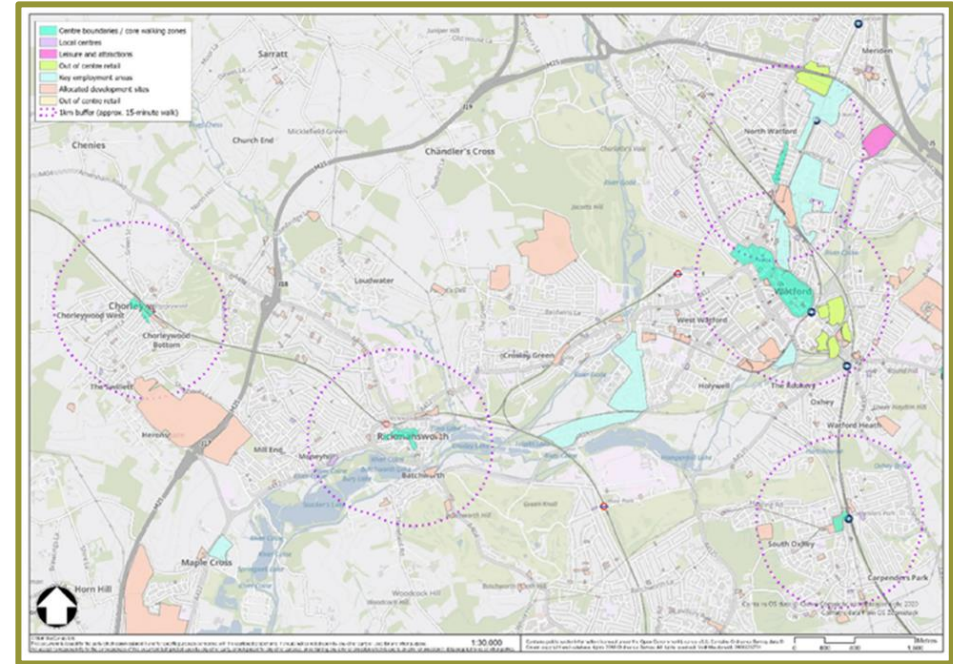
Despite high levels of car ownership and car use, there is a strong potential for higher levels of walking and cycling for short journeys. Three Rivers already has one of the higher levels of cycling in Hertfordshire, and infrastructure improvements will support people to make this choice more often.

A recent travel survey also showed that there was a desire for improved walking and cycling routes with 20% of those who commented highlighting this need.

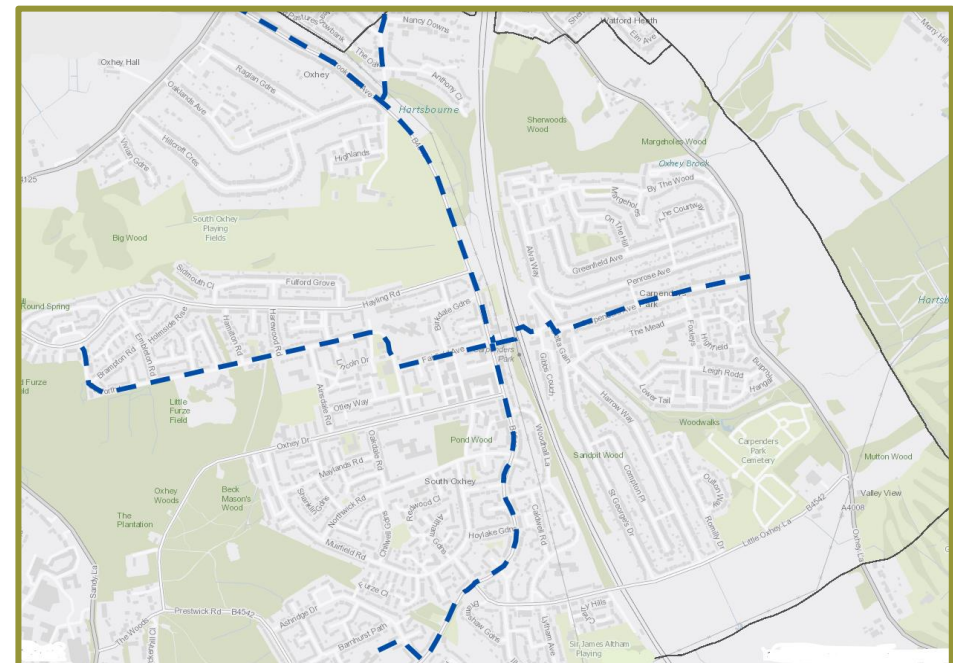
Walking routes

Originally three core walking zones were identified in Three Rivers;

Rickmansworth Town Centre, Carpenders Park and Chorleywood. In this iteration of the LCWIP Carpenders Park was identified as the local priority.

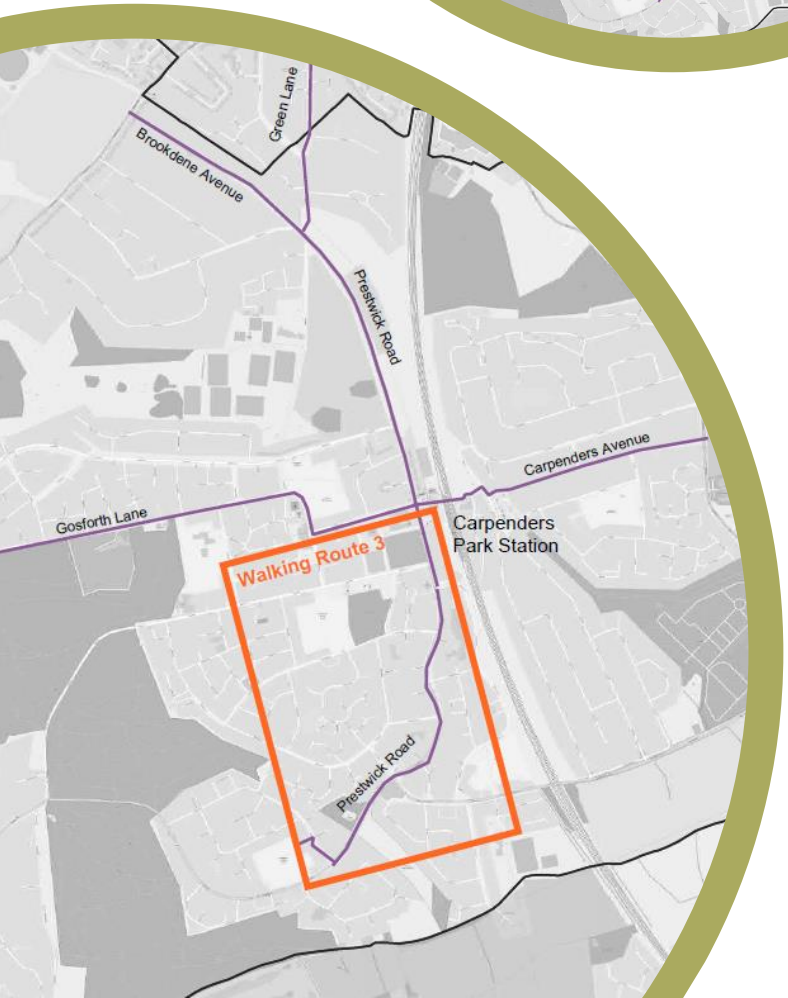
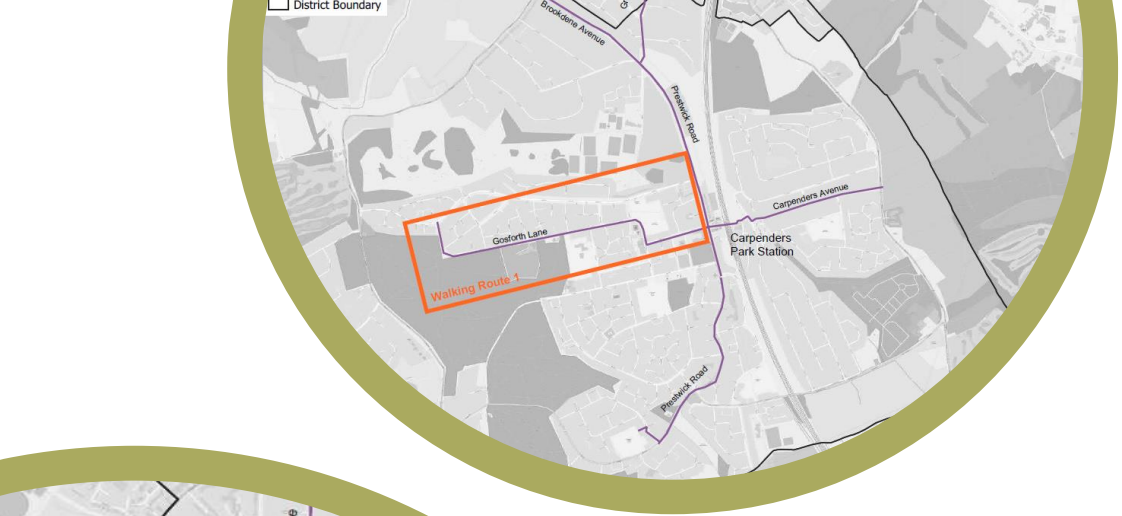


Five key walking routes providing access to Carpenders Park were then identified along with the improvements to make it easier to walk along them.

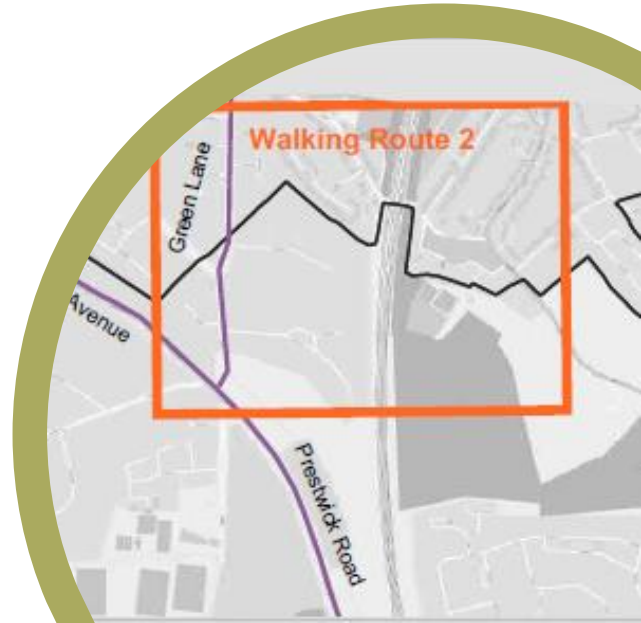


Want more detail?

View the full report <http://www.hertfordshire.gov.uk/lcwips>



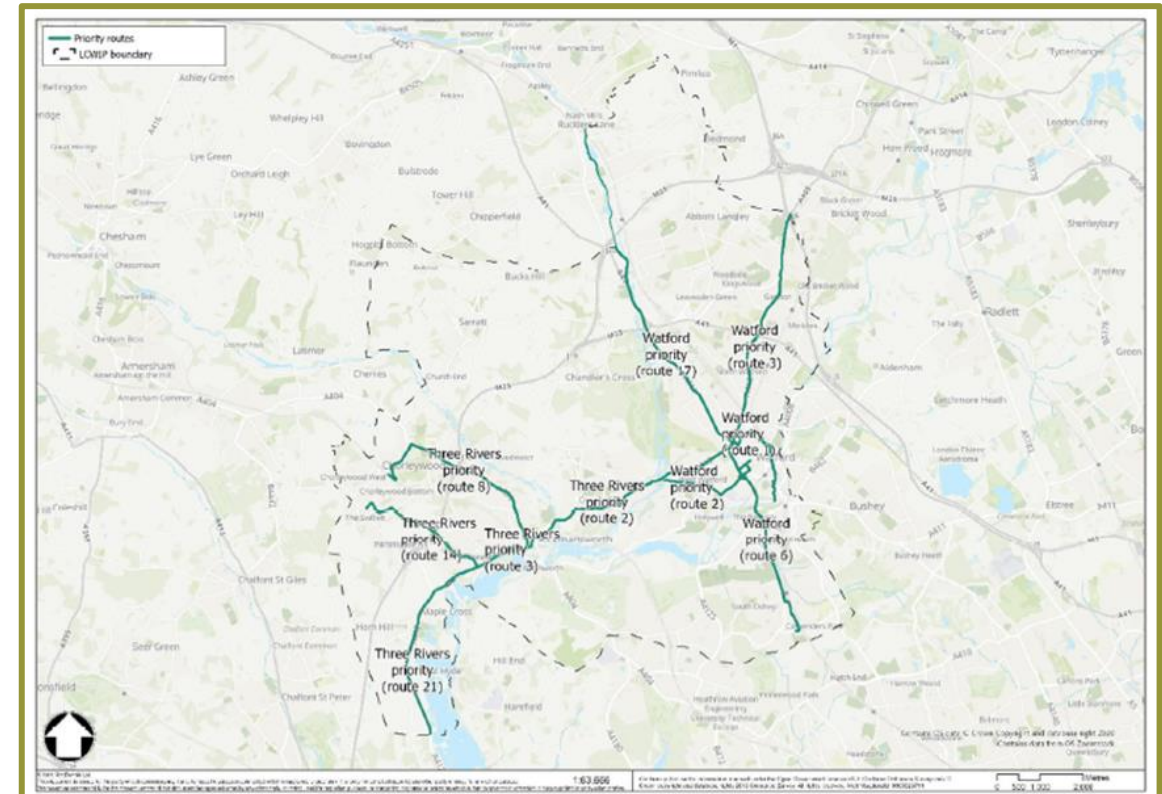
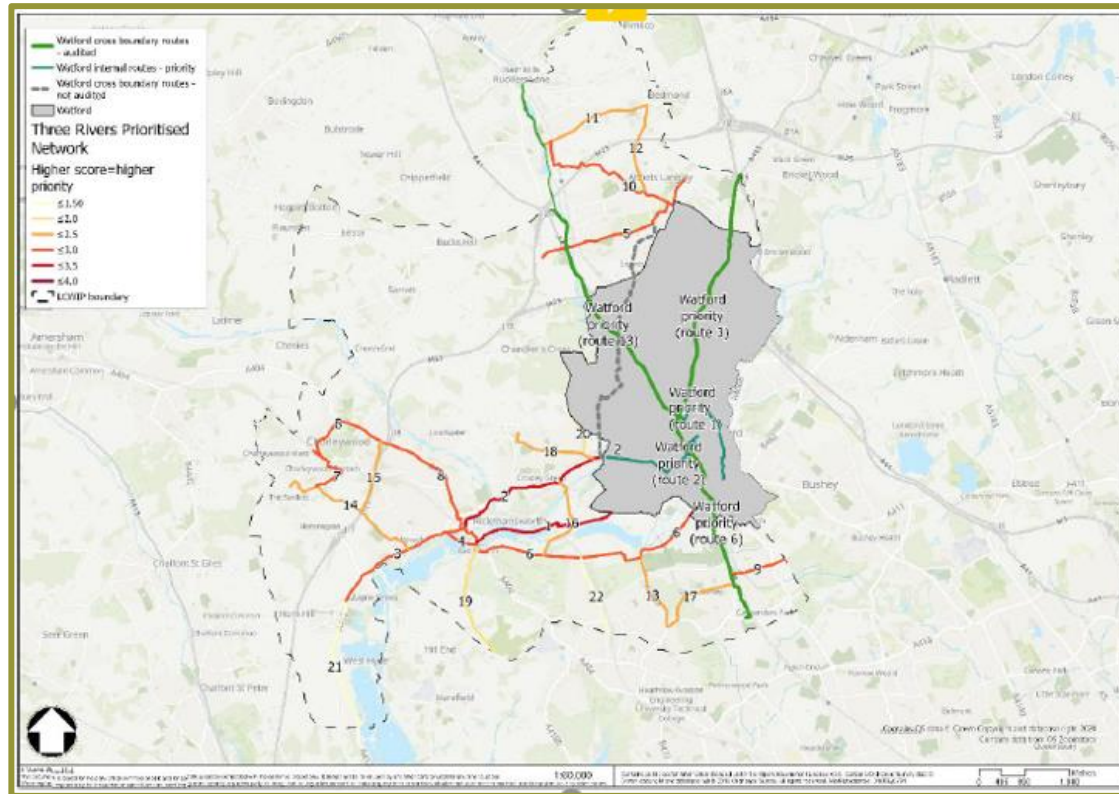
The 5 walking routes prioritised for improvements in Carpenders Park.

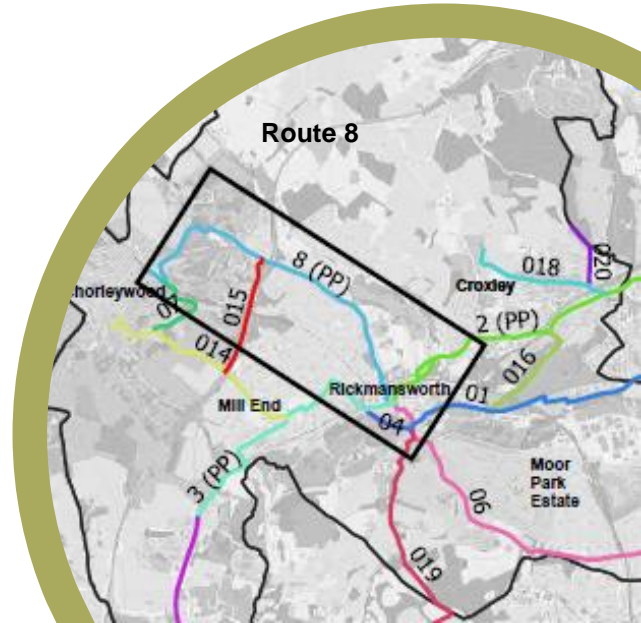
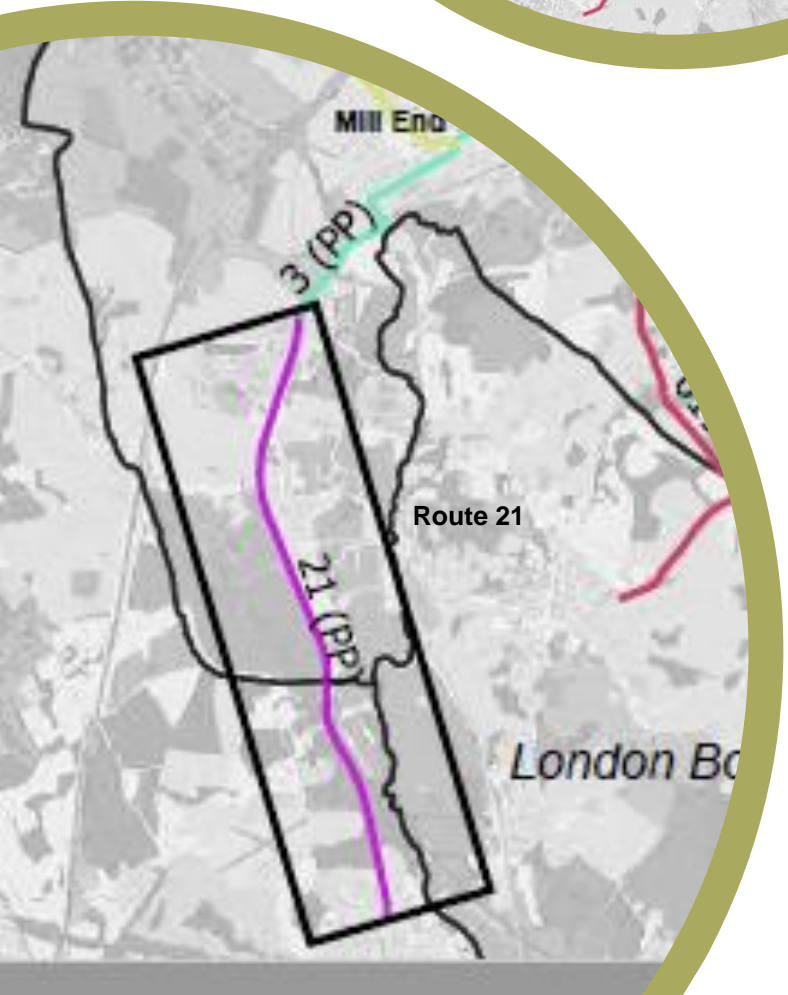
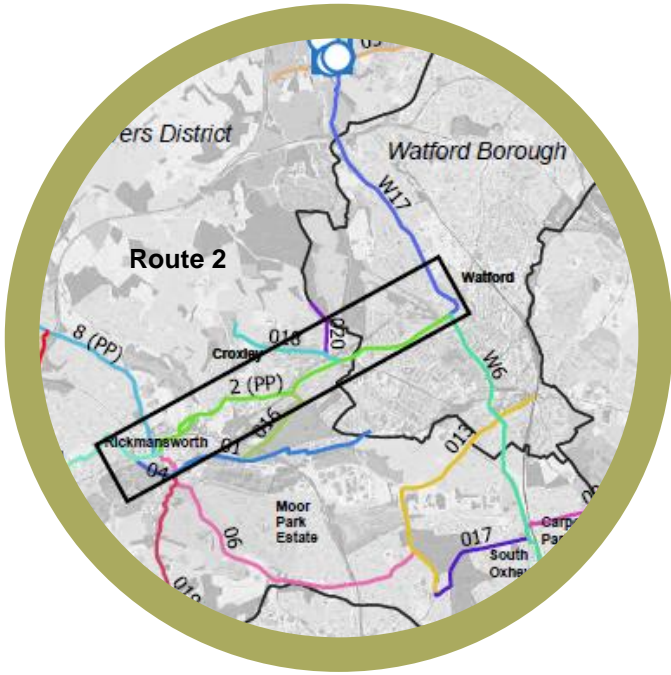
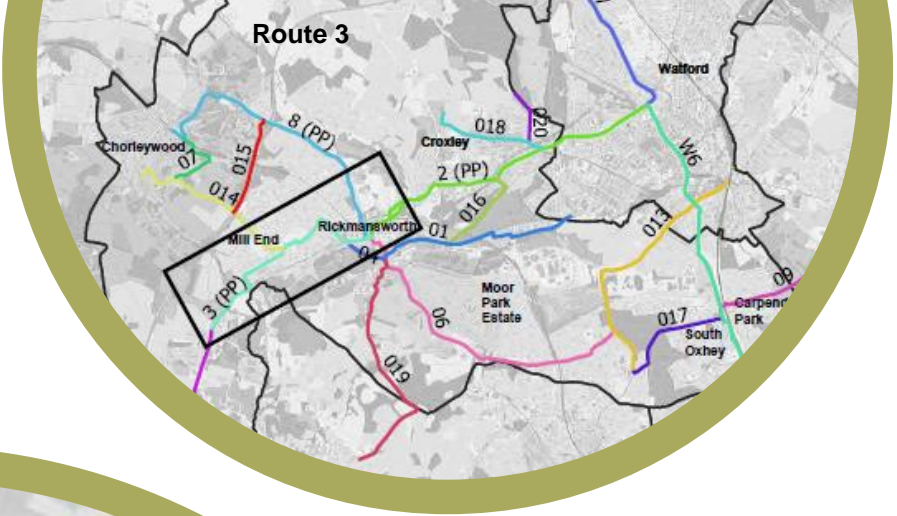


Cycling routes

We have identified a key cycling network across the Watford and Three Rivers area. The routes were then given a score. The higher the score the higher the priority

- **Primary routes** are those with the most demand. They usually connect large residential areas with key destinations, such as town centres.
- **Secondary routes** are routes which connect smaller settlements and other destinations, such as schools and employment sites.
- **Priority routes** 5 routes have been prioritised for further detailed assessments.





The 5 cycling routes prioritised for improvements in Three Rivers.

Infrastructure Improvements

We have assessed all of the priority routes and suggested changes to make them better for people walking and cycling.

The tables show the types of scheme being considered on parts of each route.

Priority Walking Routes	Route No
Carpenders Park Station to Hayling Road	1
Carpenders Park Station to Watford Heath	2
Prestwick Road South to Greenfields School	3
Carpenders Park Station to Oxhey Lane	4
Prestwick Rd North to Hampermill Lane	5

Priority Cycling Routes	Proposed Measures	Route No
Rickmansworth – Watford A412	2 way cycle tracks, improved crossings, public realm improvements and footpath widening.	2
Rickmansworth - West	Traffic calming and speed reductions, junction upgrades, 2 way cycle track and crossing improvements (part).	3
Rickmansworth - Chorleywood	Traffic calming and speed reductions, widening of shared use path, 2 way cycle track, modal filter.	8
Shepherds Lane	Traffic calming and speed reductions, improved side road crossings, 2 way cycle track (part), Quietway.	14
Maple Cross South	2 way cycle track, crossing improvements, low traffic route.	21

Want more detail?

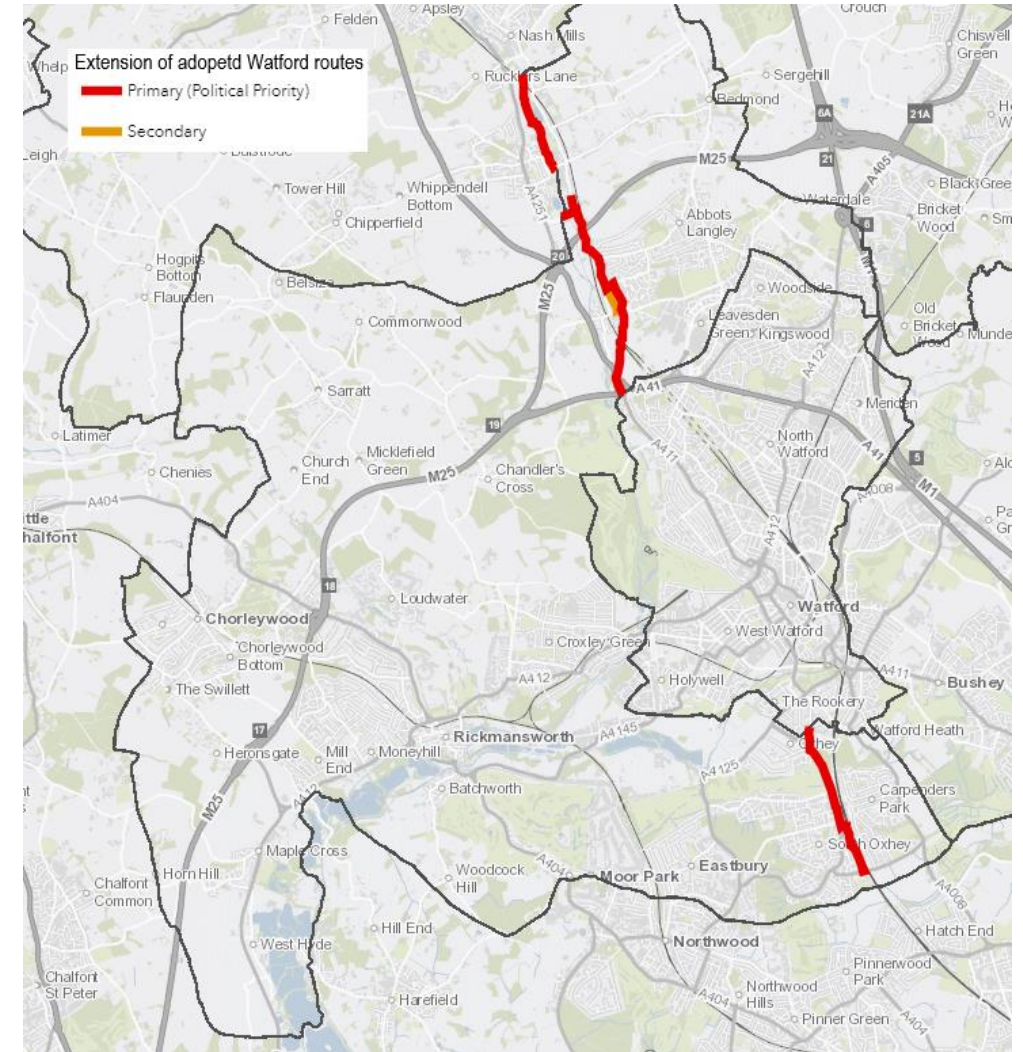
View the full breakdown of potential measures in Appendix B of the Technical Report

Cycle routes that cross district borders

There are also some sections of the cycling routes that are on both Watford and Three Rivers district. This map shows the TRDC sections of routes that cross over into Watford Borough.

Watford priority route 17 extends to the north of Watford in TRDC

Watford Priority route 6 extends south through Oxhey in TRDC. Both are indicated in red on the map.



Want more detail?

View the full report <http://www.hertfordshire.gov.uk/lcwips>



Respond to
the
consultation

Visit www.hertfordshire.gov.uk/lcwips
to read the full Technical Report,
browse the proposal maps in full, log
your comments on a map or respond
to a short survey with your thoughts.

Policy context

National policy

Gear Change (2020)

Local Transport Note 1/20 (2020)

Cycling and Walking Investment Strategy 1/2 (2017/2022)

Future of Mobility: Urban Strategy (2019)

Clean Air Strategy (2019)

Bus Back Better (2021)

Inclusive Transport Strategy (2018)

Future of Freight (2022)

Net Zero Strategy (2022)

National Disability Strategy (2021)

National Planning Policy Framework (2021)

Decarbonising Transport (2021)

County-wide policies

Local Transport Plan (2018)

South West Hertfordshire Cycle Study (2013)

South West Growth and Transport Plan (2019)

Hertfordshire County Council, Adoption of the Place and Movement Approach

A414 Corridor Strategy (2018)

Emergency Active Travel Fund (2020)

Other LCWIP's in Development

Hertfordshire County Council Active Travel Strategy (2013)

District/Borough policies

Three Rivers District Council Local Plan (2011)

Watford Borough Council Local plan 2020-2036

Watford High Street and Cultural Hub Masterplan (2019)

Major scheme developments in WBC and TRDC